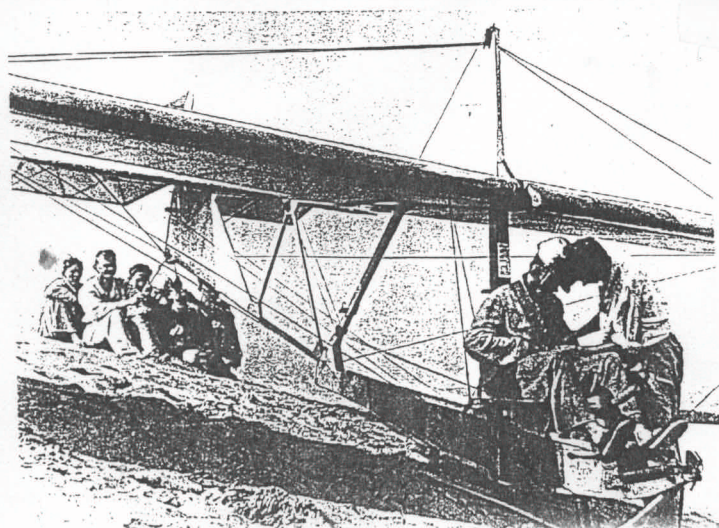
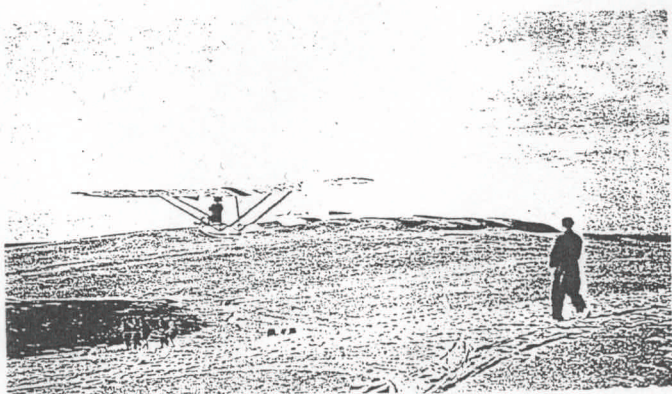
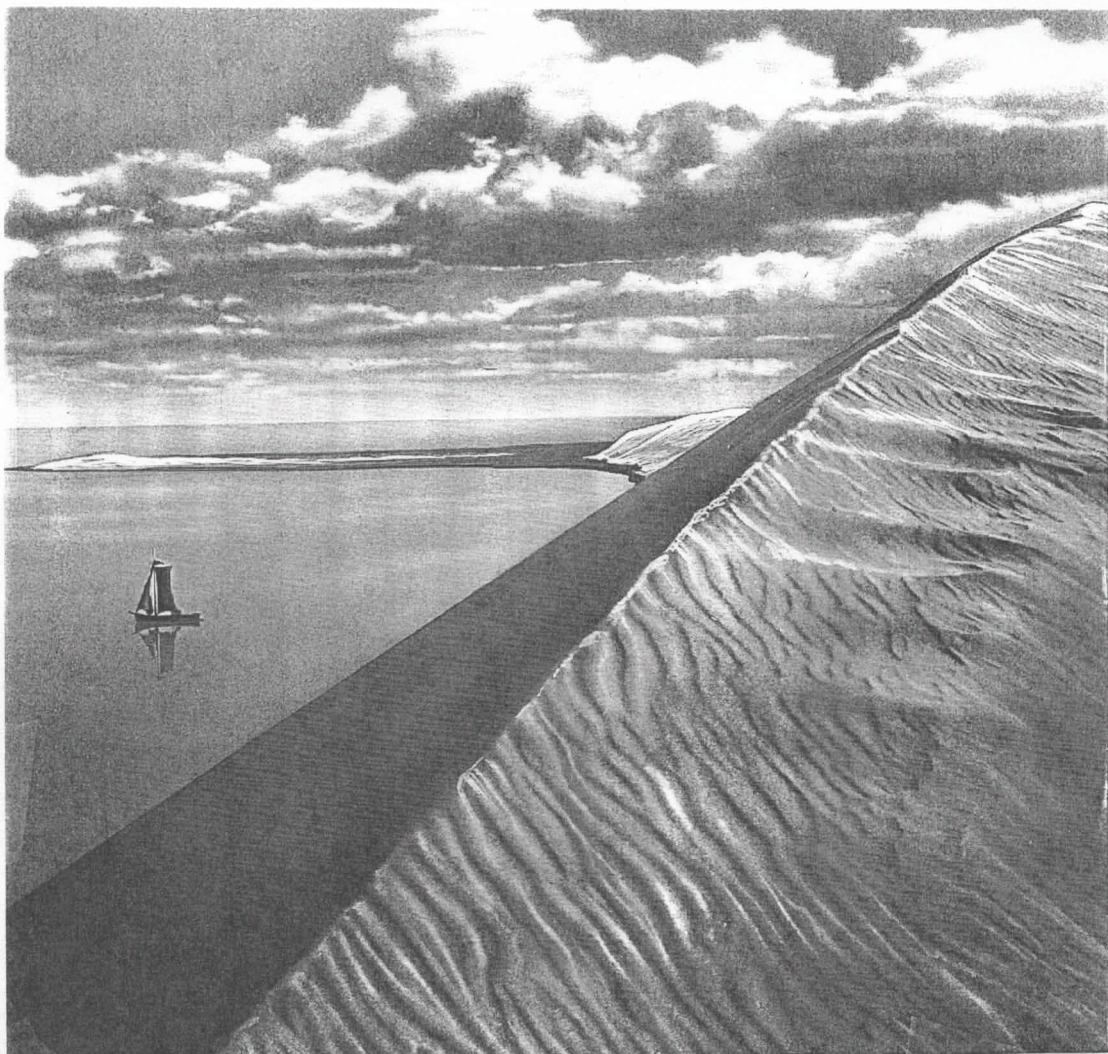


Localities stimulating Curiosity in Atmospheric Science

High-school years 1924/26 -- The physics of wind-blown sand, necessary to understand build up and eastward migration of the high dunes between lagoon (Kurisches Haff) and the Baltic Sea -- Wind deflection carrying hang-glider planes.



Schooling on west slope; record flights at east slope of 150-ft dune chain